

CROWN

# WP 3000 SERIES

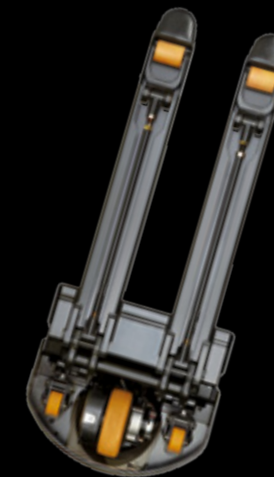




# Built to **handle** anything.

Life's tough for pedestrian pallet trucks. They must manoeuvre in tight spaces, withstand impacts, deliver power on demand and give operators controlled performance.

That's a tall order, but one delivered with confidence through Crown's WP 3000 Series.



## **Robust.**

The WP 3000 Series is designed and built by Crown to be the most robust pedestrian pallet truck available. Superior steel construction, highly engineered stability systems and exceptional fork design add up to strength you can feel.



## **Reliable.**

With Crown's AC traction system, users experience unmatched reliability and performance. Features such as e-GEN<sup>®</sup> braking and a Five-Year Supplemental Power Unit and Fork Weldment Guarantee, make the WP 3000 Series the clear choice.



## **Preferred.**

The WP 3000 Series is preferred by operators hands down. With our X10<sup>®</sup> handle, superior stability and numerous operator-friendly features, the WP Series makes pallet handling easier than ever.

Pedestrian pallet trucks are put to the test every day in the most demanding applications. That's why you need the **WP 3000 Series – the workhorse of the warehouse.**

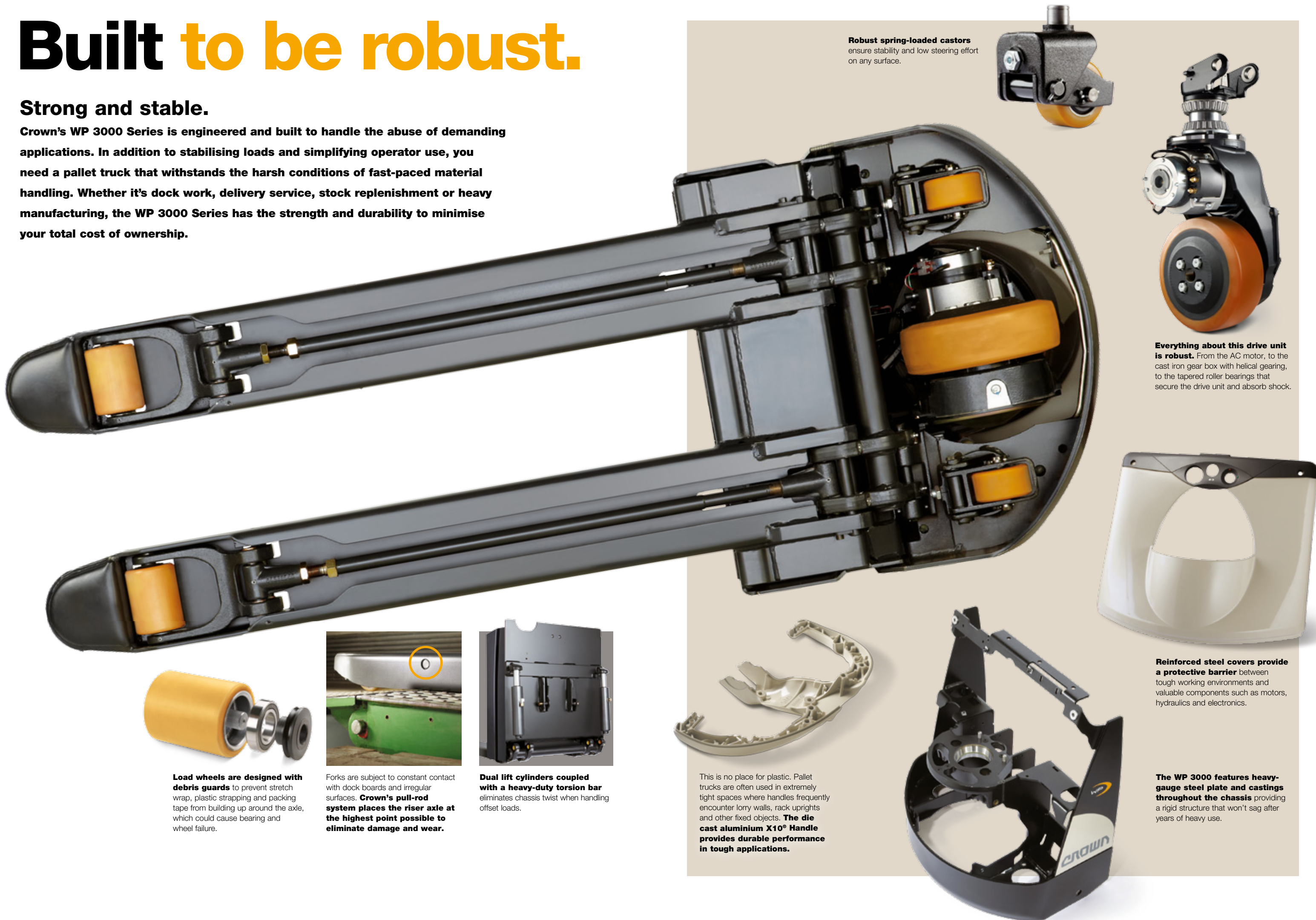
## **WP 3000** SERIES



# Built to be robust.

## Strong and stable.

Crown's WP 3000 Series is engineered and built to handle the abuse of demanding applications. In addition to stabilising loads and simplifying operator use, you need a pallet truck that withstands the harsh conditions of fast-paced material handling. Whether it's dock work, delivery service, stock replenishment or heavy manufacturing, the WP 3000 Series has the strength and durability to minimise your total cost of ownership.



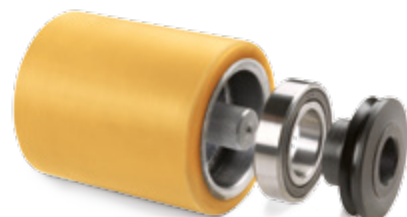
**Robust spring-loaded castors** ensure stability and low steering effort on any surface.



**Everything about this drive unit is robust.** From the AC motor, to the cast iron gear box with helical gearing, to the tapered roller bearings that secure the drive unit and absorb shock.



**Reinforced steel covers provide a protective barrier** between tough working environments and valuable components such as motors, hydraulics and electronics.



**Load wheels are designed with debris guards** to prevent stretch wrap, plastic strapping and packing tape from building up around the axle, which could cause bearing and wheel failure.



Forks are subject to constant contact with dock boards and irregular surfaces. **Crown's pull-rod system places the riser axle at the highest point possible to eliminate damage and wear.**



**Dual lift cylinders coupled with a heavy-duty torsion bar** eliminates chassis twist when handling offset loads.



This is no place for plastic. Pallet trucks are often used in extremely tight spaces where handles frequently encounter lorry walls, rack uprights and other fixed objects. **The die cast aluminium X10° Handle provides durable performance in tough applications.**



**The WP 3000 features heavy-gauge steel plate and castings throughout the chassis** providing a rigid structure that won't sag after years of heavy use.



# Proven **reliable.**

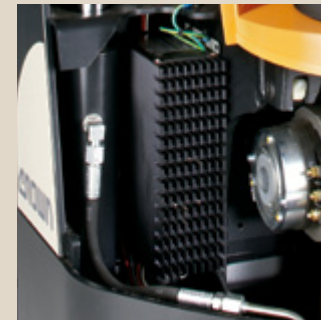
## Designed for uptime.

We know the bottom-line cost of downtime is never low enough. We engineered the WP 3000 Series to minimise the cost of routine maintenance with innovative solutions that increase component life and reduce service cost.



## There's uptime in every detail.

Crown understands the importance of a pallet truck in your day-to-day operation. Crown designers and engineers consider every detail to ensure greater reliability, longer life and a more satisfying ownership experience.



**Sealed high-frequency charger** is designed to operate without a separate cooling fan for even greater reliability.



**Lift cut-out at full lift** protects the motor and pump from continuing to work once full lift is reached. This reduces energy consumption and extends component life.



**Adjustable fork linkage** ensures proper alignment of load wheels resulting in extended wheel life, improved pallet entry and increased truck stability. In addition, the boxed-in design of the fork tips prevents build up of debris.



## Premier traction system.

In addition to providing responsive acceleration, smooth direction changes and precise control, the powerful AC traction motor adds value by maintaining performance as the battery discharges. The sealed, brushless design also contributes to enhanced long-term reliability.



## Stop worrying about brakes.

While friction brakes have stopped trucks for years, they also require repair and adjustment, adding to routine maintenance costs. With Crown's innovative e-GEN braking system, operators experience smooth and consistent braking, while your bottom line benefits from the maintenance-free service brake. And since braking occurs in the motor, energy is returned to the battery for even more efficiency.

## Simplified diagnostics and service.

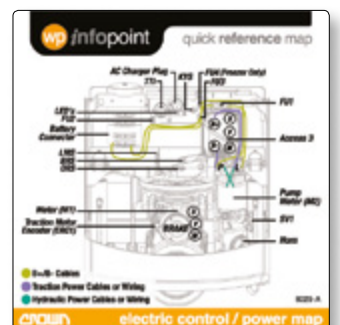
The WP 3000 Series utilises Crown's integrated diagnostics that include event code readout on the display and InfoPoint component mapping. A one-piece cover and optimised component placement makes servicing quick and easy.



**The standard display features event code readout** to clearly identify system status during truck operation or start up.



**InfoPoint™ component maps** located throughout the truck simplifies component identification for rapid service and less downtime.





# Operator preferred.

## Manoeuvrable and in control.

When you're working in tight spaces with heavy loads, manoeuvrability and control are vital to safety, productivity and comfort. That's where Crown's innovative X10® Control Handle, advanced systems and comprehensive approach to truck stability set Crown apart.

Ask operators who have used other pallet trucks and you'll find they prefer the Crown WP 3000 Series.



**1. Programmable Rabbit/Turtle Switch** The X10's rabbit/turtle switch incorporates two levels of programmable travel performance to match operator experience and application environment.

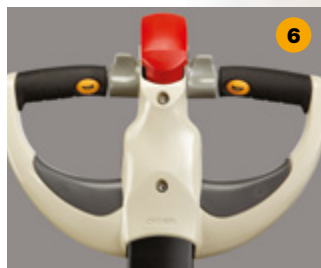
**2. Forward/Reverse Thumbwheel** The X10's unique thumbwheel design incorporates three distinct contact points to provide infinite speed control and postural relief in both forward and reverse direction.

**3. Auto Reverse** The X10's auto-reverse switch is designed with a contoured shape that allows for positive activation in any handle operating position.

**4. Urethane Anti-Static Hand Grips** The X10's hand grips provide the ultimate in comfort for any environment: freezer, wet or dry. Integrated grip points simplify steering effort. Grip angle is designed for neutral wrist position.

**5. Raise/Lower Buttons** The raise and lower controls provide tactile feedback and are ideally positioned for blending of lift/lower and traction functions regardless of travel direction.

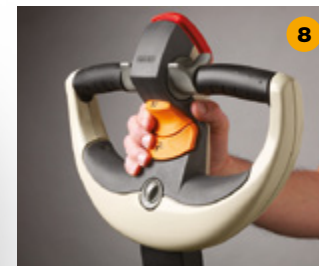
**6. Horn Buttons** The horn buttons are integrated into the X10's grips, providing easy access for either one-handed or two-handed operation.



### 7. Robust Structural Design

The X10 Handle incorporates a vacuum die cast process using high-grade aluminium and benefits from structural webbing for maximum strength and durability.

**8. Vertical Grip** The X10 Handle incorporates a sculpted control pod formed to allow for operation of the raise and lower functions while in a vertical position.



### 9. Compact Design

The slim design coupled with a brake override feature allows manoeuvring in tight spaces with the handle in a near vertical position while remaining within the profile of the power unit.

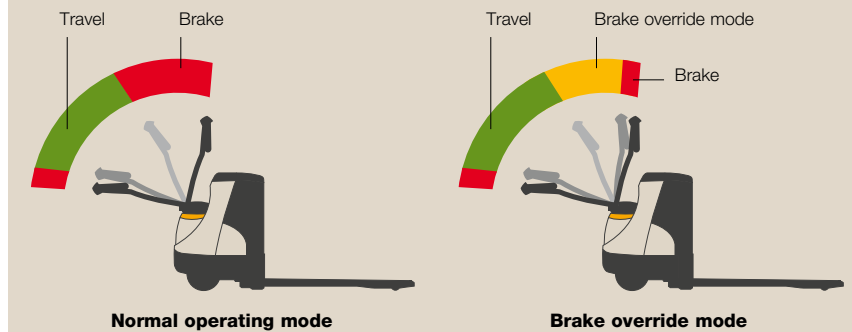


### 10. Service Simplicity

The X10 Handle simplifies service with quick access to internal components. Standard corrosion-resistant internal parts and sealed switches improve service life. Individual printed circuit boards can be replaced separately for ultimate cost efficiency.

## Handle with ease.

The WP 3000 Series provides the tools operators need to complete their work with more ease than ever including **brake override**, **ramp hold** and more visible **pallet entry**.



Crown gives operators the best of both worlds: in the **normal operating mode** a large brake zone ensures that operators can easily and quickly stop the truck during normal operation. When working in tight spaces, the **brake override mode** enables operators to position the handle in near vertical position while engaging traction at creep speed for fine-tuned load positioning.



**Crown's ramp hold improves operator confidence and control** by minimising the possibility of unexpected reverse travel when stopped on an incline. It also allows consistent speed on ramps, with or without a load.



**Pallet entry** is enhanced by increased visibility of the fork tips resulting from the combination of a low profile power unit and Crown's exclusive fork tip indicators.



## Ready to handle any challenge.

The WP 3000 Series pedestrian pallet truck has been engineered to be both powerful and flexible to meet the requirements of many demanding applications.



Heavy manufacturing environments demand high capacities and long-term durability. The WP 3000 Series chassis and lift system easily handles these heavy, tall and uneven loads.



The high-lift fork model raises heavy loads to a comfortable working height to reduce back strain and increase worker productivity.



Delivering goods on time is crucial for the beverage, food and supply industries. You need a tough truck that you can rely on day and night.



Stocking retail shelves presents special challenges due to their irregular aisles, bystanders and products that must be unloaded by hand. Exceptional control and quiet operation are built into the every WP 3000 pallet truck.

# Industry workhorse.

Make no mistake. The pedestrian pallet truck you choose is an investment you'll have to live with. An "any brand will do" approach can lead to lost productivity, costly downtime, frustrated operators and shortened truck life – adding up to disruptions and greater costs for your operation.

Choose the WP 3000 Series from Crown, the truck that delivers long-term value:

- Built to be robust and last longer.
- Proven reliable for lower operating costs.
- Preferred by operators.

**Crown WP 3000 Series**  
**Robust. Reliable. Preferred.**



Visit [crown.com](http://crown.com)  
See the WP 3000 Series





**Crown Gabelstapler GmbH & Co. KG**

Moosacher Strasse 52  
80809 Munich, Germany

**Tel** +49(0)89-93002-0

**Fax** +49(0)89-93002-133

**[www.crown.com](http://www.crown.com)**

Because Crown is continually improving its products, specifications are subject to change without notice.

Crown, the Crown logo, the color beige, Crown MonoLift, the Momentum Mark, Access 1 2 3, InfoLink, OnTrac and the ecologic logo are trademarks of Crown Equipment Corporation.

Copyright 2012 Crown Equipment Corporation  
WP 3000 BROCH GB 07/12, 10 - M01423-006-00  
Printed in Germany



Clean Environment. Smart Business.

Printed on elemental chlorine free and  
sustainably forested paper.